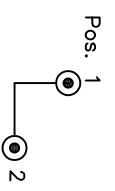
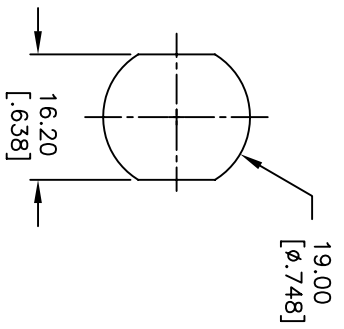


NOTES:

1. ALL DIMENSIONS IN MM [INCH]
2. GENERAL TOLERANCE: 0.0=±0.4
0.00=±0.25
3. TERM. NOS. FOR REF. ONLY
4. CONTACT RATING: 4A @125VAC/28VDC, 2A @250VAC
5. CONTACT RESISTANCE: 10 milliohms Typical
6. DIELECTRIC STRENGTH: 1,500VAC for 1 min.
7. ELECTRICAL LIFE: 10,000 make-and-break cycles at full load.
8. KEYS: Nickel plated with code no. A126 (2 Keys)
9. ELECTROSTATIC DISCHARGE (ESD) RESISTANCE: 15KV DC min. @SEA LEVEL; Bushing to terminals
10. 2002/95/EC (ROHS) COMPLIANT



Key Pull: Pos. 3,5
CIRCUIT: SP (90° INDEXING)
CONTACT CONFIGURATION

SWITCH FUNCTION	
CONNECTED TERMINAL #	
POS. 3	POS. 5
8-1, 4-5	1-3, 5-7
ON	ON

REV.	ECN No.	DESCRIPTION	DATE	CHKD
A	15998	RELEASED FOR PRODUCTION	5/23/06	CT

TITLE		SCALE		DATE	DR	DWG	REV
KD130SA126ANTISTATIC		1.5:1		5/23/06	CT	K200269	A



THE INFORMATION CONTAINED IN THIS DOCUMENT IS PROPRIETARY TO E-SWITCH AND IS NOT TO BE COPIED OR TRANSFERRED